

VIMTO GARDENS, SALFORD

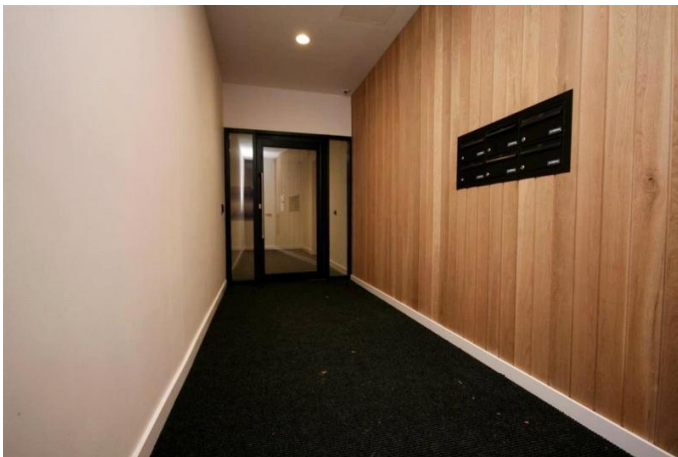
Grade II Listed Refurb & New Build



Client: Galliford Try

Value: £980k

Named in honour of the famous tonic created in a nearby warehouse; at £13.5m, Vimto Gardens was one of Salford's biggest redevelopments in 2015. Creating 97 new dwellings and ground floor retail units, the project has injected much needed rejuvenation into the Chapel Street corridor.



- ▲ High Spec Internal fit out of residential units including fitted wardrobes and feature bathroom vanities & cabinets
- ▲ Internal doorsets throughout
- ▲ Secure by Design timber communal doors & apartment entrance doors
- ▲ Feature American White Oak cladding to entrance areas
- ▲ Various trims & design profiles
- ▲ Oversized timber heritage external doors and canopies to the Bell Tower building
- ▲ Composite decking to balconies
- ▲ Extensive cedar structures to the external courtyard

Project challenges:

Design of the timber FD60 Secure by Design doors, liaising with the architect, manufacturer and Police SBD Officer

Strict programme over 12 months

Large scale project planning with sectional completions

Fire Compartmentalisation